

Real World User Experience

QoS

QoS

Fading

Load & Stress Test



MsSIM GSM

Multi-MS simulation over the radio interface with a single device

The revolutionary approach to perform full load and stress testing of GSM radio carriers

The MsSIM solution developed by PRISMA allows full loading of multiple GSM carriers with a single device. On each carrier, hundreds of simulated mobiles can concurrently generate load over the radio interface for both Circuit Switched and Packet Switched Services.

Evolved EDGE and UAMOS ready

MsSIM supports the GSM/GPRS/EDGE, Evolved EDGE and UAMOS standards. Appropriate radio modules allow a choice between the 850, 900, 1800 and 1900MHz radio bands.

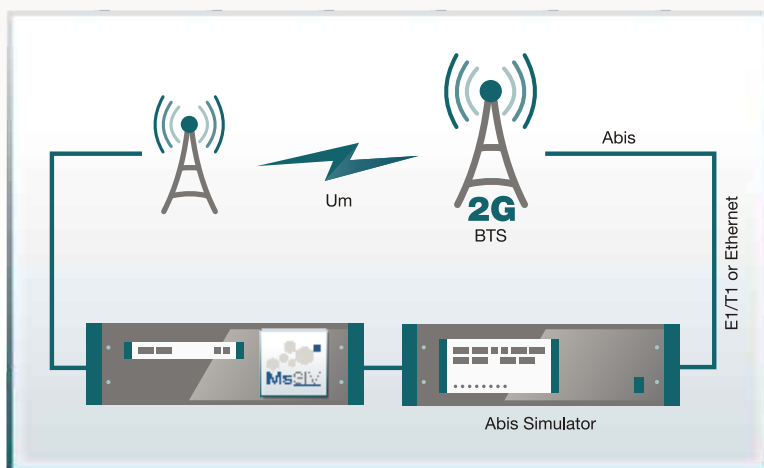
Direct baseband support can be provided via OBSAI and/or CPRI interfaces.

Detailed test options, easy operation and configuration of test scenarios

The advanced features offered by MsSIM include detailed and integrated monitoring over radio and baseband layers, simulation of protocol violation conditions and error injection at multiple protocol levels.

Complex test scenarios are simple to configure and execute: the intuitive Graphical User Interface *AirMosaic* provides a wide variety of combined traffic loads via scenarios associated to individual or groups of terminals. Reports rich in details are simple to outline.

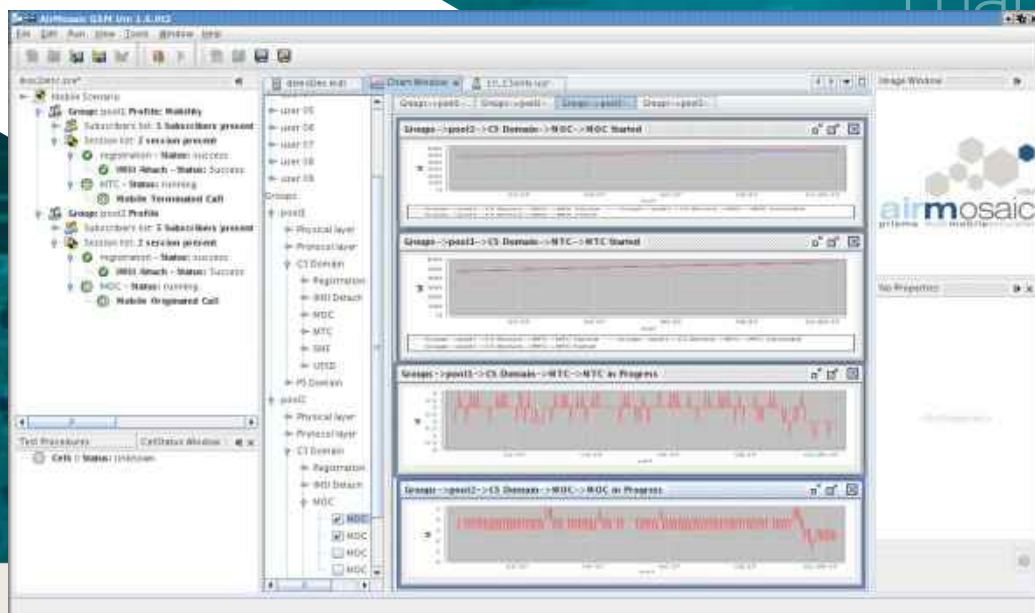
Specific issues can easily be associated to the Devices Under Test (DUTs). Radio cabling is dramatically reduced by the use of a single device.



MsSIM radio interface testing can be complemented by Abis simulation

Verify radio performances and new features

Often GSM Service Providers and Vendors are not able to evaluate and test new features to be rolled out in their network, due to a lack of terminals embedding the necessary capabilities. MsSIM enables radio testing otherwise not feasible even with pre-commercial terminals. Furthermore, integration with PRISMA's SIM Server array gives the ability to use real SIMs to verify the system behavior. Tight QoS policies can be verified in full load conditions with real user profiles.



Complex test scenarios are simple to configure and execute: the intuitive Graphical User Interface AirMosaic provides a wide variety of combined traffic loads via scenarios associated to individual or groups of terminals

Inter Radio Access Technology (RAT) testing

A key requirement for all 3GPP standards is the interoperability between different Radio Access Technologies (RATs). PRISMA complies by providing multi-terminal solutions for 2G, 3G and 4G radio standards.

Integration with Abis, A/Gb simulation solutions

MsSIM can be part of a complete testing and monitoring solution if integrated with other PRISMA modules. Simulation over the radio interface can be complemented by Abis and A/Gb simulation, obtaining a complete end-to-end testing platform for BTS/BSS network elements.

Flexible hardware configurations to fit any capacity need

MsSIM configuration is modular and easily scalable. It allows tailored solutions for any testing need and is suitable for both small and large test beds.

Multi standard hardware platform

MsSIM is part of the LSU SDR Family designed by PRISMA to test radio interfaces with different standards, using a common hardware and modular software architecture.

This approach will ensure an unrivaled protection of investment for testing equipment, simply because PRISMA's solution will intelligently follow Customer needs as they evolve and expand. PRISMA's LSU SDR hardware and software releases follow the ever evolving official standards versions, thus being immediately available for deployment.

Integration with other PRISMA products, such as Ticket Producer for Charging Verification

Ticket Producer is a solution developed by PRISMA to avoid any risk of revenue loss on the network. It gives Mobile Service Providers the ability to verify at the signaling source of their wireless network elements the accuracy of their billing system. MsSIM can be part of this solution, constituting the most accurate system for charging verification today.



www.prisma-eng.com

PRISMA Engineering Srl
Via Petrocchi 4 - 20127 Milano (Italy)

phone: +39 02 26 11 35 07
fax: +39 02 26 11 35 97
e-mail: info@prisma-eng.com

PRISMA Engineering France
Technoparc - Espace Média
3 Rue Gustave Eiffel - 78306 Poissy Cedex (France)

phone: +33 (0)1 39 22 30 40
fax: +33 (0)1 39 22 30 39
e-mail: france@prisma-eng.com

PRISMA Shanghai Trading Co., Ltd.
Far East Mansion - Office 908
1101 South Pudong Rd. - Shanghai 200122 (P.R.C.)

phone: +86 (0)21 58 36 26 50
fax: +86 (0)21 58 36 26 50 (ext. 15)
e-mail: china@prisma-eng.com